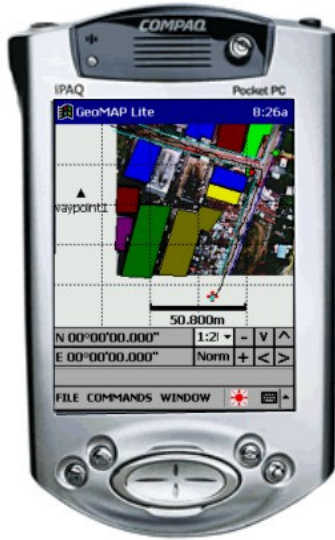


GeoMap Lite (Pocket GIS) Vers. 2.0

The Mobile GIS/Mapping Software

Powered By
Microsoft
Windows CE

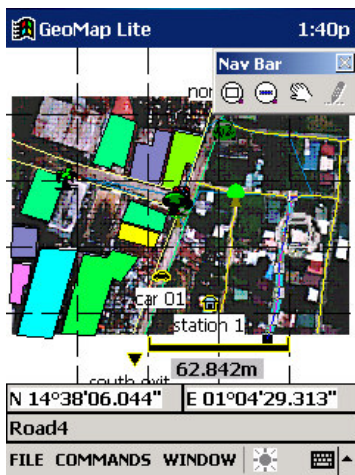
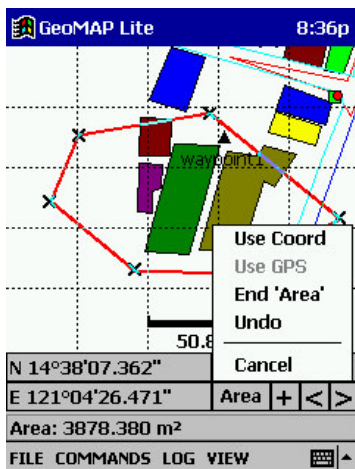
www.geoanalytika.com



GeoAnalytika is proud to introduce **GeoMap Lite (Pocket GIS)** for your mobile field mapping, surveying and Geographic Information Systems (GIS) needs. GeoMap Lite will enable the efficient data collection and validation of relevant field information for storage in a GIS database and analysis. It is the perfect tool for facilities and utilities mapping, boundary, pipeline, environmental mapping and data collection, demographic, scientific and engineering mapping and surveying. It is also ideal for asset mapping, resource management, utilities management, civil engineering and oil/gas/mineral exploration.

Features:

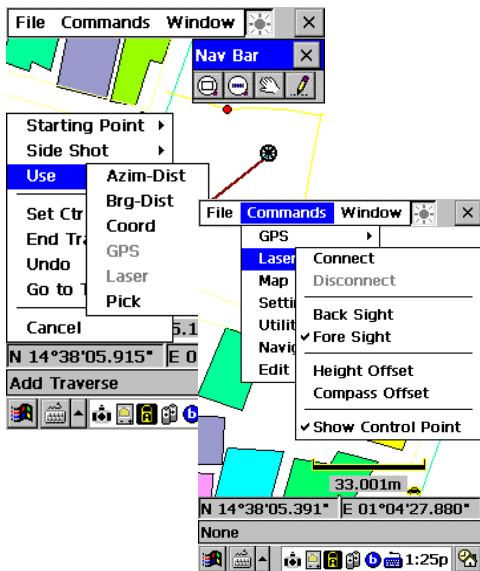
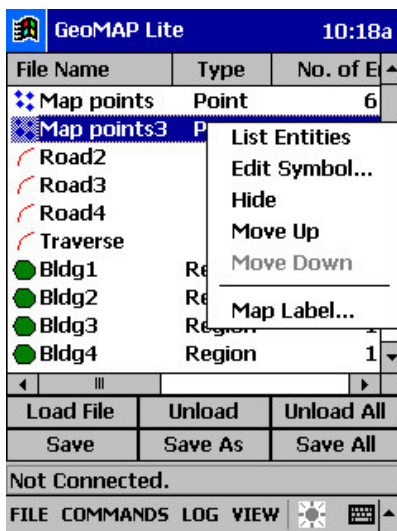
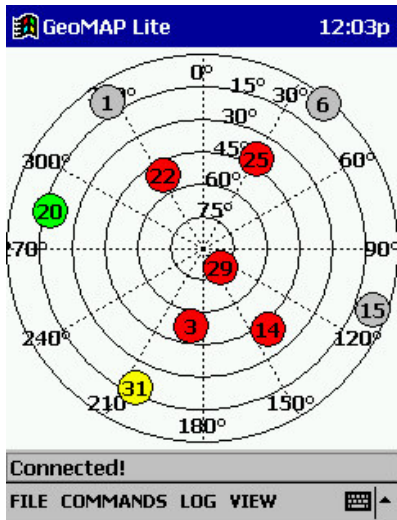
- Enables Navigation of GIS maps using variable zoom-in, zoom-out, pan, set to scale, scale specify.
- Overlay vector map layers over geo-referenced images such as aerial photos or satellite acquired imagery.
- Quickly locate locations, map objects, waypoints, tracks and images using **GoTo** commands.
- Enables query of GIS Data using Search, Locate and Identify features.
- Download and upload GIS data from the Internet using wireless technology without the need for dedicated servers.
- Link and display **any** form of data to map objects such as text documents, time stamps, voice and video clips, images, and hyperlink web sites.
- Link and launch a Pocket PC application with any map object.
- Measure and Analyze distances, areas, bearings and azimuths.
- Edit map vertices (i.e. insert and delete) using pen or coordinates.
- Navigate to locations or waypoints using intelligent **moving map** features, waypoint **icons** and **audible** indicators.
- Has Loss-of-lock indicator and issues an audible warning
- User can set mask angle and can monitor HDOP and SNR quality.
- Supports **traverse** operations and **radial surveys** through **direct coordinate input** and supports **Laser Devices** and a **Magnetic Compass**.
- Log GPS Track points, evaluate GPS info, and increase GPS position quality using smoothing options
- Create maps using inputs from a combination of external data collection devices, pen/pointer, and direct coordinate input.
- Edit maps using a combination of insert, move, and delete commands and powerful **CAD/COGO** operations with *vertex snap* options.
- Change the visibility (on/off) and hierarchy of map layers.



Another Quality Product

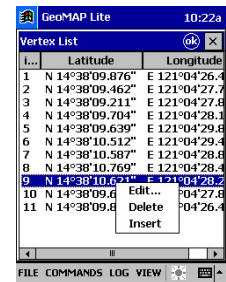
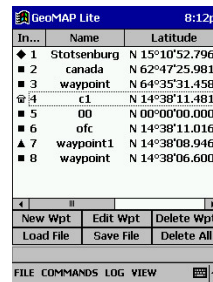
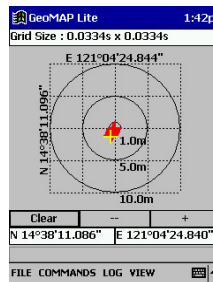
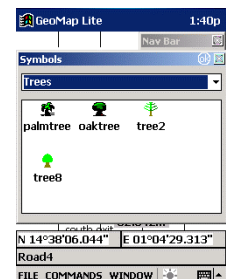
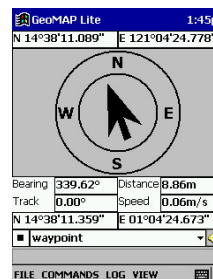
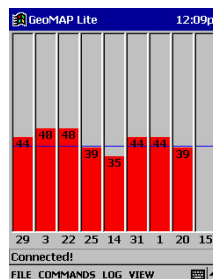


Developing Advanced
Technologies for Today's Needs



Features:

- A **Data Dictionary** builder enables the efficient input and updating and linking of attribute data for objects in the field.
- Supplied with ready to use **icon library** for map symbols. User can supply or create own library.
- Create your own **georeferenced** maps and images for use in the field using supplied desktop utility.
- Supports wide range of **devices** for data collection such as Global Positioning Systems (GPS), Laser Ranging Products, and Geodetic Surveying Equipment.
- Supports **DGPS** ready receivers and formats such as from Earthmate, GeoGPS, Trimble, and Garmin.
- User can specify and change datum and UTM zone.
- Extract, project and convert to popular CAD and GIS formats.
- Supports a wide variety of industry standard GIS vector and image formats such as ESRI ArcView Shape, AutoCad Dxf, Mr. SID by LizardTech, Ermapper ECW, GeoTIFF, Windows Bitmap BMP, and JPEG.



GeoMap Lite Pocket GIS can accept input from Surveying / GPS/ Mapping Instruments



For Pricing Inquiries:

Web www.geoanalytika.com
 Email sales@geoanalytika.com
 Call +63-2-4344484

System Requirements

Operating System – Pocket PC or Win CE 2.11 and up
 CPU – SHx, StrongArm, MIPS
 GPS – NMEA 0183, DeLorme Earthmate, TSIP
 Laser – LTI Impulse and Criterion