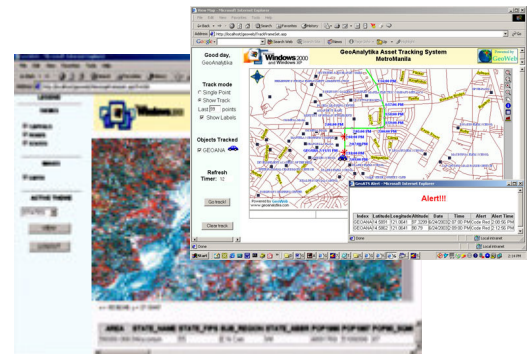


## Application Areas

- Internet/Intranet GIS
- Web Mobile Asset/Vehicle Tracking
- Web Emergency Response System
- Web GIS Decision Support Systems
- Web Assisted City/Municipal Planning and Mapping System
- Tax and Parcel Information Systems



## Specification

<b>Licensing</b>	Per Server
<b>Supported Formats</b>	<p><b>Server</b></p> <ul style="list-style-type: none"> <li>• ASP (and ASP .NET) for Microsoft IIS 4.0 and above</li> <li>• Windows 2000, 2000+ Server, NT and XP</li> </ul> <p><b>Client</b></p> <ul style="list-style-type: none"> <li>• Any PC supporting HTML browser (IE 5 or Netscape 7)</li> </ul>
<b>Programming Language</b>	HTML, ASP and ASP .Net
<b>Speed</b>	Fast Server Side processing Fast image map streaming to client
<b>Vector Layer (native format)</b>	ESRI .shp MapInfo TAB (option) OGIS [upcoming]
<b>Raster Layer (native format)</b>	TIFF and GeoTIFF Ermapper ECW (compressed) BMP JPEG
<b>External RDBMS</b>	Reads and links SQL based information LAN/Internet in MSJET and ADO/ODBC (MS Access, MS SQL, My SQL, and Oracle) Other RDBMS [upcoming]
<b>External Image Serving</b>	[upcoming]
<b>Query Mapping</b>	Simple Query Layer (spatial + attribute(s) combination per layer) Complex Query (spatial + attribute(s) combination of multiple layers)
<b>Thematic Mapping</b>	Custom control (admin and client side) Legend Control Pie/Bar charts [upcoming]
<b>Spatial Indexing</b>	Spatial Index Builder for Fast R-Tree indexing
<b>Labeling</b>	Intelligent label placing (overlap avoidance and display readability features) Line/Curve placing

# Specifications

---

<b>Symbols</b>	Bitmap point symbols Bitmap dynamic links Bitmap Area Fill
<b>Routing</b>	Street and Network Module (Optional)
<b>Object Tracking</b>	Included (max of 3) for core module GeoATS (optional with unlimited number of objects and GPS support)
<b>Draw Features</b>	Standard (point, line, polyline, area) Coordinate input Save user drawing to GIS Layer
<b>Display Features</b>	Arrange map display layering via Layer Manager Modify Image or Map Layer transparency Map Coordinates Measure Bearings, Distances and Areas Callouts/Tooltips
<b>Editing/Saving</b>	Standard GIS Attribute Database (ESRI .dbf) MS Access RDBMS link (optional) Vector Layer(upcoming)
<b>Printing</b>	Print Composer allows high resolution printing
<b>Server Administration</b>	GeoAdmin Wizard (LAN or Internet) Full GIS map display control (color and style) User Logging Edit/Update User Profile and Project Access
<b>Security</b>	ASP code hiding DLL based Compatible with SSL data encryption, web server security and restrictions User Name Password Access Four Access levels <ul style="list-style-type: none"><li>• no log in required</li><li>• level 1 (no user edit of GIS database)</li><li>• level 2 (user can edit GIS database)</li><li>• level 3 (mapping admin only)</li></ul>
<b>Customization</b>	Log-in page, Main map display titles and colors, logo, buttons
<b>Support</b>	Free Email Technical Support
<b>Upgrade</b>	Free for one year